



State of New Jersey
 THE PINELANDS COMMISSION
 PO Box 359
 NEW LISBON, NJ 08064
 (609) 894-7300
 www.nj.gov/pinelands



PHILIP D. MURPHY
 Governor
 SHEILA Y. OLIVER
 Lt. Governor

General Information: Info@pinelands.nj.gov
 Application Specific Information: AppInfo@pinelands.nj.gov

RICHARD PRICKETT
 Chairman
 SUSAN R. GROGAN
 Acting Executive Director

2022 Pinelands National Reserve Wall Calendars Now Available for Free at Five Locations in the Pinelands (11/24/2021)

Copies of the 2022 Pinelands National Reserve wall calendar are now available free of charge at five locations in the Pinelands.

The calendar features 38 stunning photos that showcase plant and animal species that can be found in the 1.1-million-acre Pinelands National Reserve of southern New Jersey.

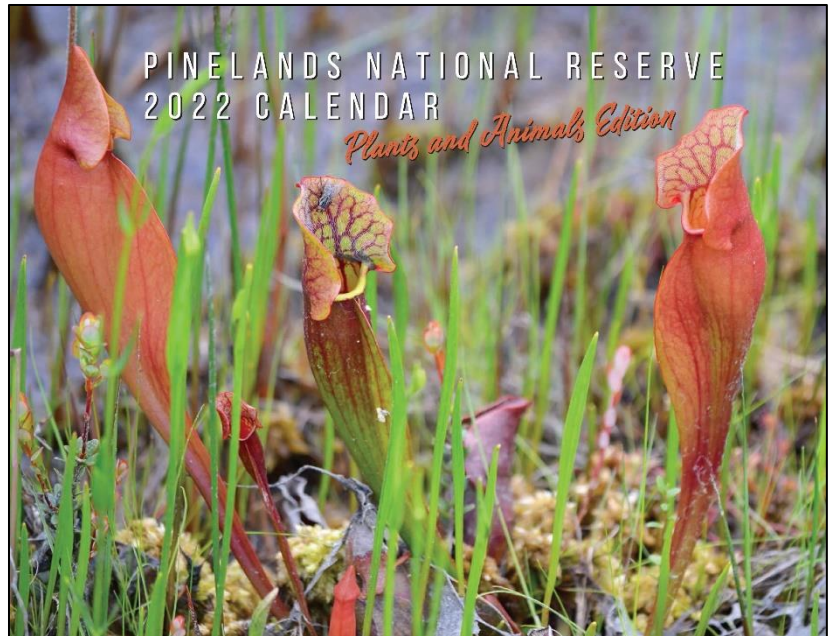
The Pinelands Commission worked with Rowan College at Burlington County to produce the calendar.

All of the photos were taken by members of the Commission’s staff. Aside from the photos, the calendar includes State holidays, dates of Pinelands Commission meetings, Commission events and important dates in Pinelands history.

Copies of the calendar can be obtained at the following locations, while supplies last. You may want to call ahead for hours of operation.

Bass River State Forest (office)
 762 Stage Road
 Bass River Township, NJ
 (609) 296-1114

Batsto Visitor Center (back door)
 31 Batsto Road
 Hammonton, NJ
 (609) 561-0024



Above: The cover of the 2022 Pinelands National Reserve wall calendar.

(MORE)

Belleplain State Forest (office)

1 Henkinsifkin Road
Woodbine, NJ
(609) 861-2404

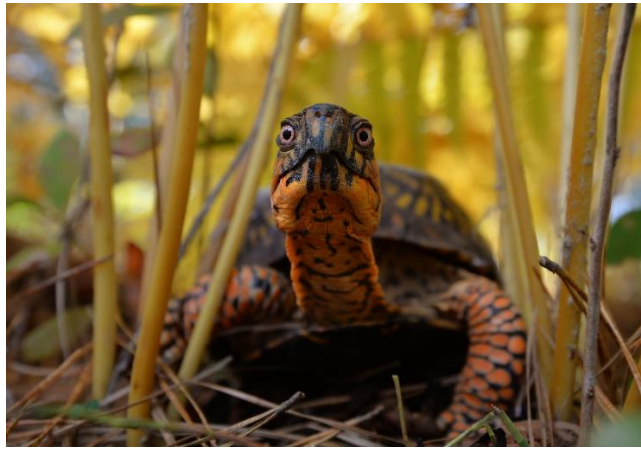
Brendan Byrne State Forest (Office)

Mile Marker 1
Highway Route 72 East
Woodland Township, NJ
(609) 726-1191

Whitesbog Village (General Store; open on Saturdays from 10 a.m. – 2 p.m.)

GPS Address: 799 Lakehurst Road, Browns Mills, NJ 08015
(609) 893-4646

***** ATTENTION REPORTERS/EDITORS:** High-resolution images of the new calendar can be obtained via e-mail by contacting Paul Leakan, the Pinelands Commission’s Communications Officer, at (609) 894-7300 or info@pinelands.nj.gov



Above: The scaly eyes and colorful head, legs, and shell indicate this handsome eastern box turtle is a male.
Photo – John Bunnell

AUGUST 2022

SUNDAY	MONDAY	TUESDAY	WEDNESDAY	THURSDAY	FRIDAY	SATURDAY
	1	2	3	4	5	6
7	8	9	10	11	12	13
14	15	16	17	18	19 <small>PINELANDS COMMISSION MEETING</small>	20
21	22	23	24	25	26	27
28	29	30	31		<small>SEPTEMBER</small>	<small>SEPTEMBER</small>



On the left: A powerful, non-sensuous caddisfly larva (with strong jaws that specialize in eating other insects, including sensitive snails), the common kingpin also eats rodents, birds, ticks, and various kinds of eggs. Female kingpins usually lay a clutch of eggs in June or July, and the eggs hatch in August or September.
Photo – John Bunnell

Calendar inset: Orange milkweeds are also known as “dog chicon,” and the low-growing plants brighten the landscape while growing on sandy, wet soils.
Photo – Paul Leakan

####